

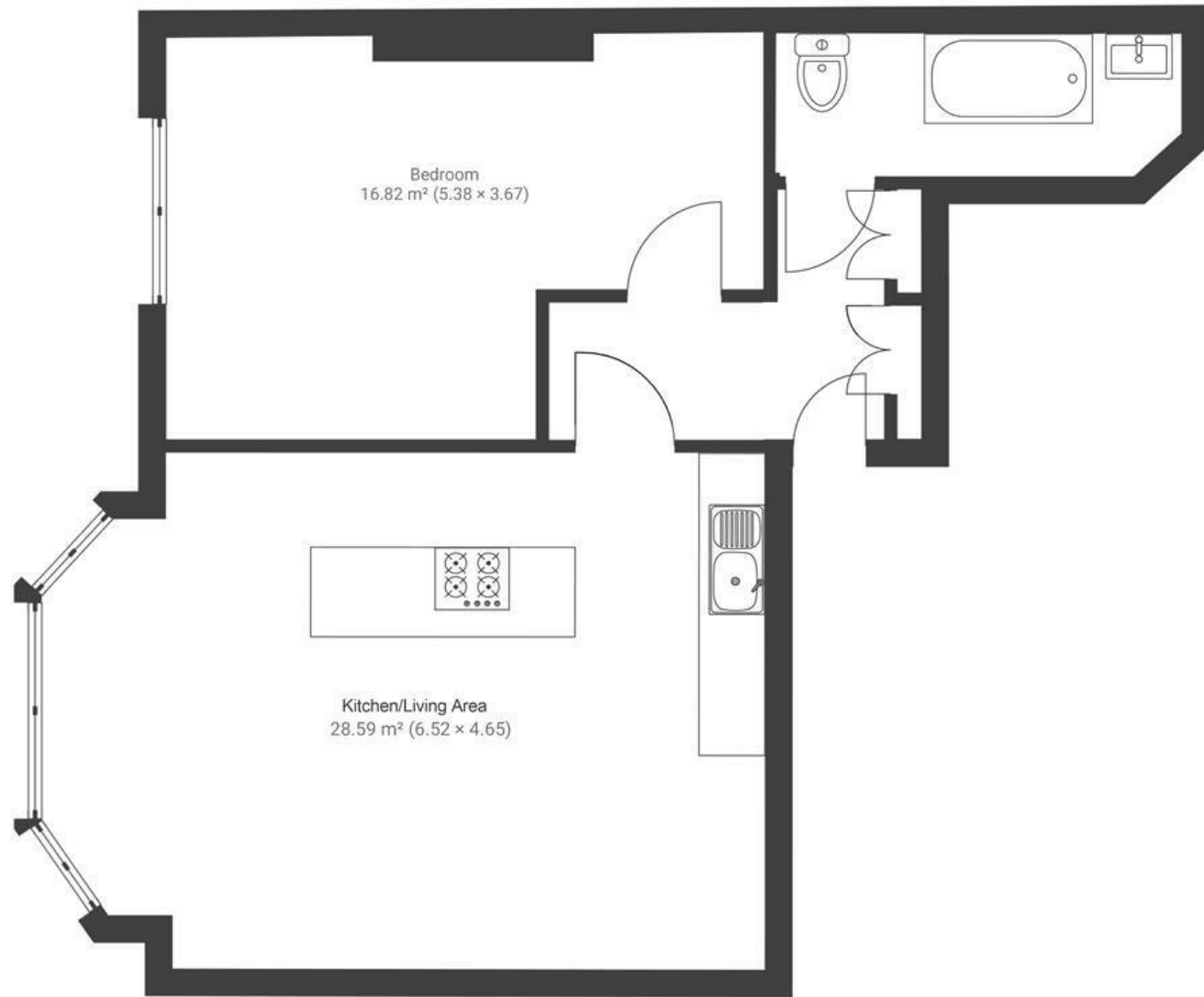
Blenheim Road

REDLAND

APPROXIMATE FLOOR AREA
57 SQM / 613 SQFT



GROUND FLOOR



Boardwalk

Blenheim Road

WESTBURY PARK, BRISTOL

£

£300,000



Bristol, BS6

7 II

ZZZ

1 Bedrooms



1 Bathrooms

"We have loved living on Blenheim Road, we truly believe it is one of the best roads to live on in Bristol. The location is peaceful, the neighbours are friendly and you are still so close to the city. We are within walking distance from White Ladies Road and all its amazing restaurants. With Clifton Downs on our doorstep we have the best of both worlds, access to the city and to nature."

